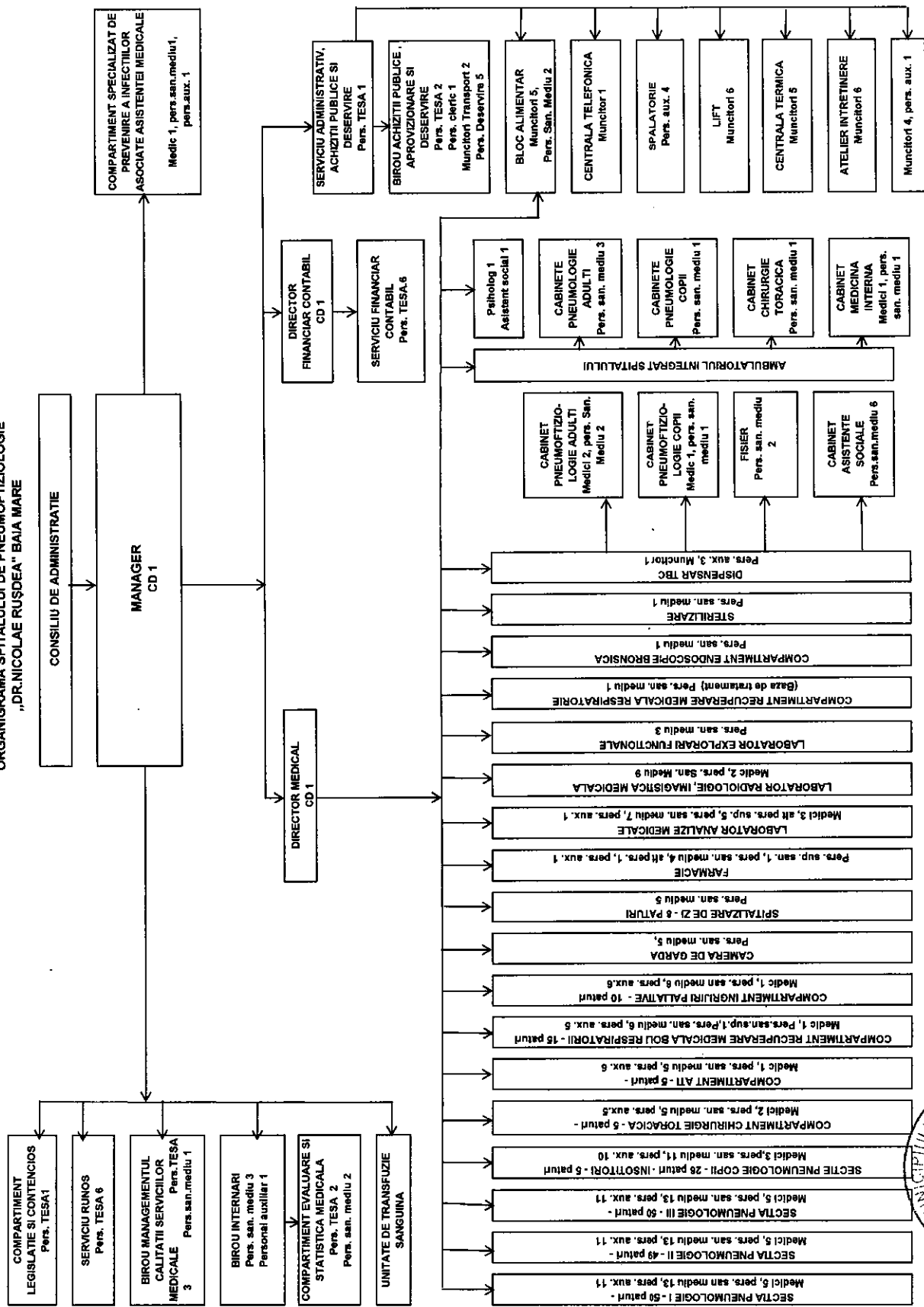
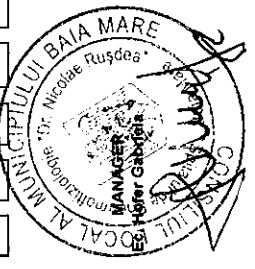


ORGANIGRAMA SPITALULUI DE PNEUMOTIZIOLOGIE  
„DR.NICOLAE RUȘDEA” BAJA MARE



Total posturi - 314 din care functii conducere 21  
 - Contier director - 3 (0,96%)  
 - Medic 1 - 33 (10,51%)  
 - Alt pers. Superior - 9 (2,87%)  
 - Pers. San. Mediu - 134 (42,87%)  
 - Pers. San. Aux. - 77 (24,52%)  
 - Pers. TESA - 21 (6,69%)  
 - Pers. Deservire - 5 (1,59%)  
 - Muncitori - 30 (9,55%)  
 - Ateli - 2 (0,64%)

Nota: Unitatea de transfuzie sanguina este deservita de personalul din compartimentul AT



SEF BIROU RŪNOS  
Ec. Roman Ana